

AMERISTONE FINISHES

DS.EN.04.52.01

Aggregate textured polymer based finish with excellent mildew resistance



PRODUCT DESCRIPTION

Ameristone... rock solid and beautiful, provides the architect and designer with a new level of durability and performance in an elegant architectural stone finish. Ameristone is a dramatic blend of natural aggregates varying in size and colour, encased in a clear, 100% acrylic binder.

FEATURES & BENEFITS

FEATURE	BENEFIT
• Acrylic based finish	Good dirt repellence and reduced algal growth
• Wide colour range of natural aggregates	Decorative and visually pleasing
• Vapour Permeable	Allows vapour transmission

AMERISTONE COLOURS



Pearl Haze 011



Stony Creek 012



White Ash 014



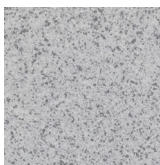
Champagne Gray 016



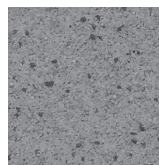
Sedona Red 017



Midnight Storm 020



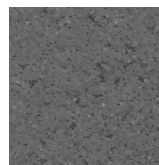
Granite Shore 021



Bay Peak 022



Black Poppy 023



Bass Rock 024

USES

Ameristone is recommended for use with any of Dryvit's exterior insulation and finish systems or ACR Systems. It can also be used as a finish over properly prepared render, concrete and masonry substrates. Ameristone is an exterior finish that is suitable for all building types.

PACKAGING

The finish is shipped in 24 kg pails.

COVERAGE

Ameristone coverage is approximately 5.1 - 6.0 m² per pail.

All coverages are approximate and depend upon substrate profile, details and individual application technique. Estimates take no account of wastage. Ameristone must never be sprayed greater than 3.2mm thick in a single coat.



AMERISTONE FINISHES

DS.EN.04.52.01

Aggregate textured polymer based finish with excellent mildew resistance

COORDINATING PRIMER

Ameristone Colours		Coordinating Color Prime Colours	
011	Pearl Haze	102	Bright White
012	Stony Creek	142	Spectrum Brown
014	White Ash	103	Natural White
016	Champagne Grey	131	Gull Gray
017	Sedona Red	345	Acorn
020	Midnight Storm	133	Driftwood
021	Granite Shore	133	Driftwood
022	Bay Peak	133	Driftwood
023	Black Poppy	713	Spectrum Black
024	Bass Rock	714	Raisin

PROPERTIES

Drying time - the drying of the finish is dependent on the air temperature, relative humidity and coating thickness. Under average drying conditions 20°C, 55% RH, protect work from rain for at least 48 hours. Lower temperatures and higher humidities will require that the finish be protected for longer during the drying period.

Temporary protection - during application and until the finish is completely dry, it must be protected against adverse weather conditions (strong wind, rain, high temperature, sunshine, fog, etc.).

PREPARATION

Surface Preparation: Surfaces must be smooth, clean, dry, structurally sound and free of efflorescence, grease, loose paint, oil, form release agents and curing compounds. Air and surface temperature for application of finish must be from 10°C to 38°C and must remain so for a minimum of 48 hours. The material temperature must be lower than 38°C. It is recommended to paint the surface with Color Prime before applying the finish.

Dryvit Reinforced Base Coat: The base coat must be dry and cured for a minimum of 24 hours before application of primer and finish.

Concrete: Shall have cured a minimum of 28 days prior to application of the finishes. If efflorescence, form release agents or curing compounds are present on the concrete surface, the surface shall be thoroughly washed with Dryvit Efflorescence Remover or equivalent product and flushed to remove residual acid. All projections shall be removed and small voids filled with Genesis, Genesis DM Plus or Fibercoat (see product data sheets for mixing and application) prior to the application of the finish.

Masonry: The masonry surface, with joints struck flush, shall be "skim coated" with Genesis, Genesis DM Plus or Fibercoat (see product data sheets for mixing and application) to produce a smooth, level surface. The skim coat must be dry and cured for a minimum of 24 hours before application of the primer and finish.

Render: Primer and finish shall be applied over the cured render. If additives are present in the render, a test patch shall be made and bond strength checked prior to application.

MIXING

Some settling of the finish may occur during shipping. Thoroughly mix the finish with a slow speed drill (450-500 rpm) and paddle until a uniform workable consistency is attained (approximately 1 min). Care should be taken not to over mix the finish.

STORAGE

Store in sealed original packaging, in dry condition at temperatures between 10°C and 38°C, for a maximum of 24 months from the production date indicated on the packaging. Protect the packaging against damages and direct impact of atmospheric conditions and moisture.

CAUTIONS & LIMITATIONS

Ameristone must not be used on exposed exterior horizontal surfaces. Minimum slope is 6 in 12, which is 27°. Maximum length of slope is 300mm.

Ameristone shall be applied at a minimum thickness of 3.2 mm, but not greater than 4.8mm.

Ameristone shall not be used below grade.

Minor colour deviation will occur due to the natural aggregate and variations in raw materials. It is strongly recommended that when ordering this finish for a particular project, all pails required to complete that project be ordered at the same time. To achieve the best colour results, material from the same batch number should be applied to a specific wall section. Therefore, check batch numbers before applying materials. Spray technique can also affect final colour. Orifice size, pressure, application thickness and the distance of the spray gun from the substrate should remain constant in order to achieve uniform appearance.

A minimum 2.5 m x 2.5 m area of actual project or mock-up wall shall be coated by the applicator/contractor with the Ameristone finish to establish acceptance by the owner, architect or project manager.

Ameristone is not intended for direct-applied, vertical applications over exterior gypsum based sheathing, foam plastic insulation or other type insulation board.



AMERISTONE FINISHES

DS.EN.04.52.01

Aggregate textured polymer based finish with excellent mildew Resistance

APPLICATION

Colour-coordinated Color Prime (*see chart) shall be applied to all substrates a minimum of four hours prior to application of Ameristone. Color Prime must be fully dry before Ameristone is applied. Ameristone should be applied by a skilled applicator experienced in the spraying of aggregate finishes. Apply in two passes (one horizontally, one vertically) to achieve uniformity. Allow the Ameristone to thoroughly dry for a minimum of 48 hours under average drying conditions, 20°C, 55% R.H. Do not apply Ameristone on surfaces, which will receive sealant. Those surfaces shall be coated with colour-coordinated Color Prime.

MAINTENANCE

Ameristone can be washed using suitable fungicidal wash. After application the washed surface should be rinsed with water. Maximum cleaning pressure -120 atmospheres. The distance of the washing nozzle from the wall should be 0.4-0.5 m.

CLEANING

All equipment must be washed with clean water immediately after use and while the finishes are still wet. Disposal must be in accordance with local and national legislation and must not be emptied into drainage systems.

HEALTH & SAFETY

For information on handling the product, storage and disposal refer to the current safety data sheet (SDS) available at www.dryvit.co.uk.

FURTHER INFORMATION – Refer to Application Instructions and the product Safety Data Sheet.

Dryvit UK Ltd
Unit 4 Wren Park
Hitchin Road
Shefford
Bedfordshire
SG17 5JD
01462 819555
Email: ukenquiries@dryvit.com
www.dryvit.co.uk

Information contained in this product data sheet conforms to the standard detail recommendations and specifications for the installation of Dryvit UK Ltd. products as of the date of publication of this document and is presented in good faith. Dryvit UK Ltd. assumes no liability, expressed or implied, as to the architecture, engineering or workmanship of any project. To ensure that you are using the latest, most complete information, contact Dryvit UK Ltd.

Manufacturing location: Dryvit Systems USA (Europe) krze Duze7; 96-325 Radziejowice, Poland

